

The Tri-Fecta U.S. Workforce 2024 and beyond >

Represents 60% of potential Labor Force

That must compete in the Price:Value-driven Global Economy.
"We cannot control the world around us or the People in it, but we can control their impact on our options and opportunities." – D.D. John

LEVEL 1 > Producers of Globally Competitive Trade Goods



D.D. JOHN, AmBe-iC
· AMBIENT INTELLIGENCE
COACH · SCHOLASTIC
ENGINEER · MENTOR

Ambient Thinkers > Adapters (Visualizers)

Driven by: Their Right-Brain-based Ambient Intelligence. Can see, grasp and respond appropriately, while connecting/supervising/managing the active components of a Situation or Circumstance (aka: its Context).

Comprised of: Pragmatic Envisionaries + Envisionary Enterprises who use A.I. + Augmented Reality + Fuzzy Logic + Smart Guessing to Beta-test their Principle-based Perspectives, including Maintenance/Repair Personnel of Automating Tools + AR Systems + Supply Chains + Distributors + R&D + Agriculture. (Those with Ys Intellectual Skill Sets/Tools and the ability to adapt DIY On-the-Fly.)

Virtual Intellect Prep (VIP) 3-Step Prep —
The only source for DIY-Mentored-Envisionary
Prepping =>VirMotely available in the USA today



24% of U.S. Workforce

> Can Manage/Connect up-to 36+ Dots to build a Visceptual > Critical Path > Strategic Plan = Big Picture

LEVEL 2 > Producers/Purveyors of Domestic Products and Services



America's A.I. Automated, Robotic, Repetitive Task/SOP-driven Workforce

Powered by: Cognitive Intelligence-based A.I. > SOP Programmed > Task/Activity-oriented Curators > Replicators and Domestic Maintenance Services/Tools.

Comprised of: Single-task robotics + table-top WiFi Devices + Droids > and NOW + Automatons = Tesla's Optimus > that will replace/reduce the cost of U.S. College/University/Grad-School Automatons and their Cognitive Intelligence-based Lineal/Binary Thinking (burdened by what-has-been) that is losing the Global Economic Competition (as the U.S. Trade Deficit + National Debt + Federal Reserve Debt, that is subsidizing Bank/Credit Card Services, so testify).

28% of U.S. Workforce

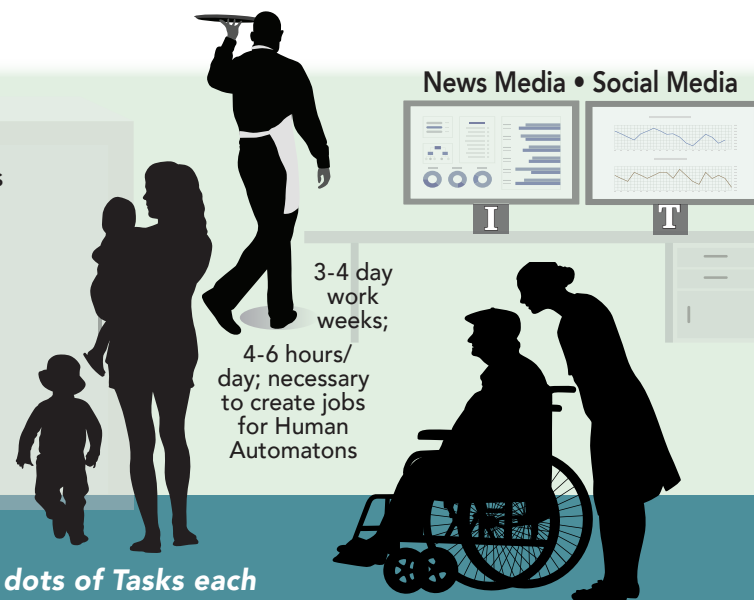
> Programed to manage up to 12 Dots of a single Big Picture Project

LEVEL 3 > Providers of Personal Services

Professional/Personal/Public Services (Verbalizers)

Driven by: Their Left-Brain-based Cognitive Intelligence = Binary/Critical Thinkers who rely-on Data, Dogma, SOP, Pundits, Pedagogues, VocEd + Superstition for direction. So says "Science" backed by a Nobel Prize in Physiology and Medicine (Roger Sperry, CalTech, 1981, Father of Left:Right Brain Balance).

Comprised of: Sales (commissioned and salaried) > Societal Maintenance > Child Care (includes U.S. schooling) > Public Employment (includes non-Profit and Taxpayer-subsidized Entities) > Managers/Administration/Curators/Clerical (follow SOP) > Entertainment > Food and Beverage > Retail > Hospitality > Care Givers > Commercial/Residential Maintenance/Repair.



News Media • Social Media

3-4 day work weeks;

4-6 hours/day; necessary to create jobs for Human Automatons

48% of U.S. Workforce

> Schooled to-manage up-to triple Assignments comprised of up-to 8 dots of Tasks each



A One-Room School House

Building 21st Century Top-Tier Employment Perspectives and Intellectual Skill Sets that earn Certification.
www.Retrac.com (Presented by Scholastic Engineering) > jcomer@ScholasticEngineering.com

©2024. Copyright. John M. Comer and/or Jill C. Applegate / Published by Scholastic Engineering. All rights reserved. info@ScholasticEngineering.com